

THE WISE LAB

WELLNESS INITIATIVE FOR SENIOR ENRICHMENT

The **WISE** Lab wants to understand how perceptions about memory relate to cognitive and mental health over time in Hispanics/Latinos(as).

WHO CAN PARTICIPATE?

- Hispanic/Latino(a) men and women ages **60 and older** who speak English or Spanish (or both).
- Have a loved one who can answer some questionnaires about you.
- Cannot have dementia or neurologic conditions like Parkinson's disease.

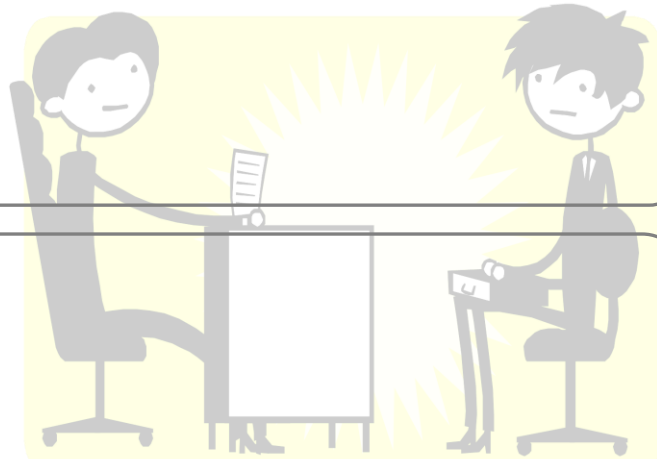


Human Research
Protections Program
UC San Diego

Approved
Current Approval: 07/28/2021
Project Number: 201231
Pages 1

WHAT'S INVOLVED?

- Cognitive testing and questionnaires.
- Provide a blood sample.



HOW LONG WILL IT TAKE?

- Three visits over 3 years.
- Each visit lasts ~5 hours.

IS THERE COMPENSATION?

- Participants will receive \$40 and their loved ones \$25 for each completed visit.
- We can help with transportation costs and arrange for phone visits if needed.

Contact **Rosa Gutierrez** at
(858) 822-7737 or email us at Wiselab@health.ucsd.edu

Principal Investigator: Dr. Zvinka Zlatar.