

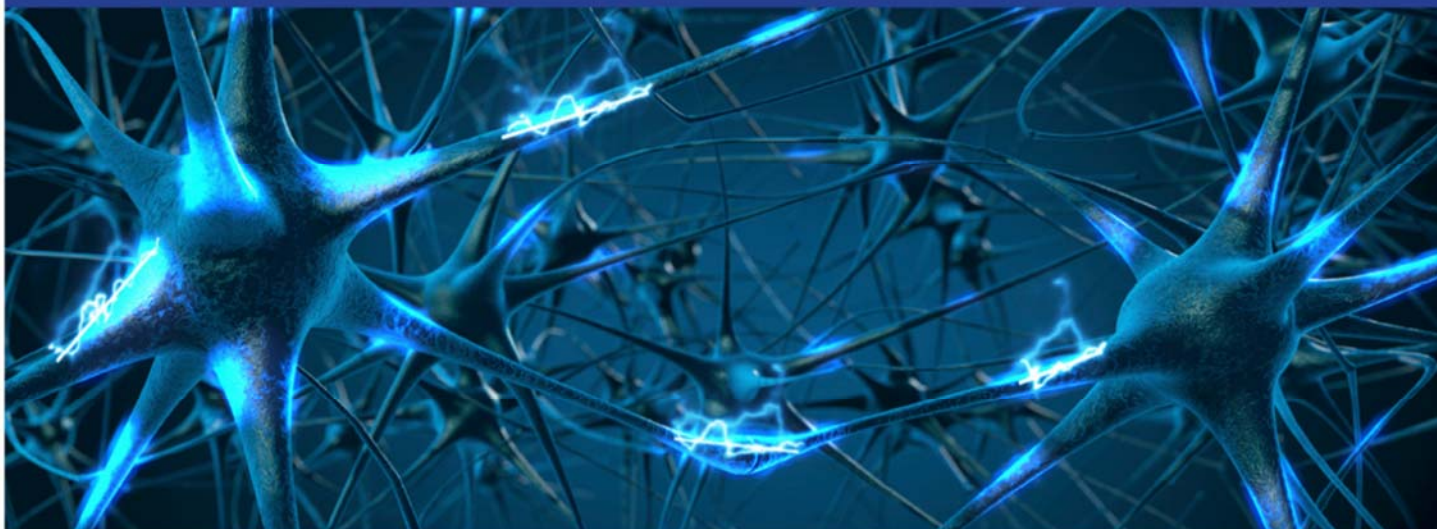
UC San Diego

School of Medicine

Shiley Marcos Alzheimer's Disease
Research Center

The Shiley-Marcos Alzheimer's Disease Research Center Presents:

Lunch and Learn Series



Memories acquired across the lifetime: behavioral, genetic, and brain correlates in Mild Cognitive Impairment"

Christine N. Smith, PhD

Research Service, Veterans Affairs San Diego

Healthcare System

Department of Psychiatry, University of California San Diego

When:

April 13, 12pm-1pm

Where:

Join from PC, Mac, Linux, iOS or Android:

<https://uchealth.zoom.us/j/431533074?pwd=WnZpcjFsUWZJV243OU56T3hHTnNUdz09>

Password: 344668

The Lunch and Learn Series is hosted by the UC San Diego Shiley-Marcos ADRC Outreach, Recruitment and Engagement Core every second Tuesday from 12pm-1pm. This monthly educational series is designed to provide ongoing training and development opportunities and strengthen relationships between members of the ADRC research community at UCSD. Research staff, trainees, and volunteers are invited to learn from faculty presenters on a wide array of topics addressing neurodegenerative diseases and research projects. The presentations will enable attendees from diverse backgrounds to share a common understanding of the underlying pathology, clinical presentation, and research implications of the neurodegenerative diseases under investigation at the Shiley-Marcos ADRC and affiliated labs. Attendees will gain a greater understanding of the breadth of research underway and the wide variety of studies utilizing our ADRC resources, including participants, data, and bio samples.

adrc.ucsd.edu • (858) 822-4800

To subscribe or unsubscribe from the mailing list, please use this link:

<https://mailman.ucsd.edu/mailman/listinfo/lunchandlearn-l>