

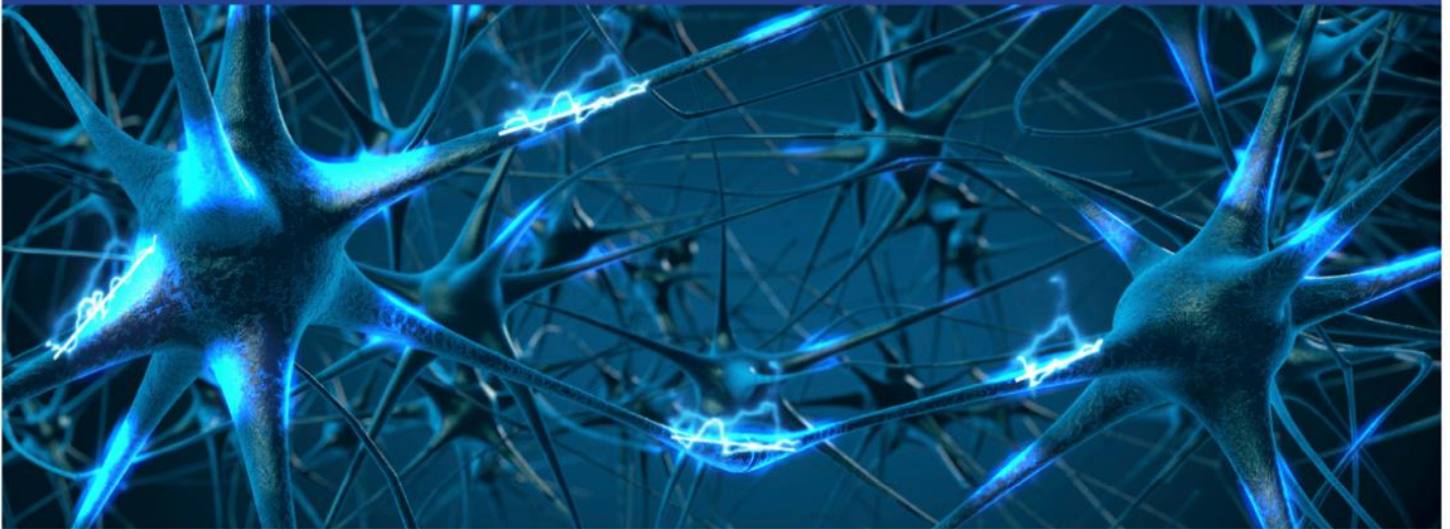
**UC San Diego**

School of Medicine

Shiley Marcos Alzheimer's Disease  
Research Center

The Shiley-Marcos Alzheimer's Disease Research Center Presents:

## Lunch and Learn Series



# A Community's Voice: The Significance of Building Community Partnership in the Study of Alzheimer's Disease in Older Black and African American Women.

**Michelle Jackson, PhD**

UC San Diego

### When:

Tuesday, April 9, 2024

12:00pm – 1:00pm

The Lunch and Learn Series is hosted by the UC San Diego Shiley-Marcos ADRC Outreach, Recruitment and Engagement Core every second Tuesday from 12pm-1pm. This monthly educational series is designed to provide ongoing training and development opportunities and strengthen relationships between members of the ADRC research community at UCSD. Research staff, trainees, and volunteers are invited to learn from faculty presenters on a wide array of topics addressing neurodegenerative diseases and research projects. The presentations will enable attendees from diverse backgrounds to share a common understanding of the underlying pathology, clinical presentation, and research implications of the neurodegenerative diseases under investigation at the Shiley-Marcos ADRC and affiliated labs. Attendees will gain a greater understanding of the breadth of research underway and the wide variety of studies utilizing our ADRC resources, including participants, data, and bio samples.

[adrc.ucsd.edu](http://adrc.ucsd.edu) • (858) 822-4800

To subscribe, send an email to [lunchandlearn-l+subscribe@ucsd.edu](mailto:lunchandlearn-l+subscribe@ucsd.edu)

SMADRC grant number: P30 AG062429